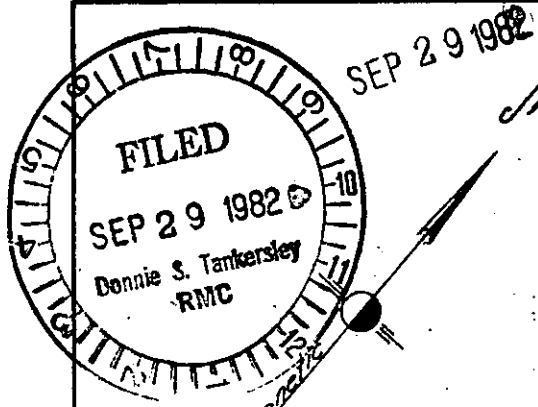


THIS PLAT IS NOT A SUBDIVISION
AS DEFINED BY THE GREENVILLE
COUNTY SUBDIVISION REGULATIONS.

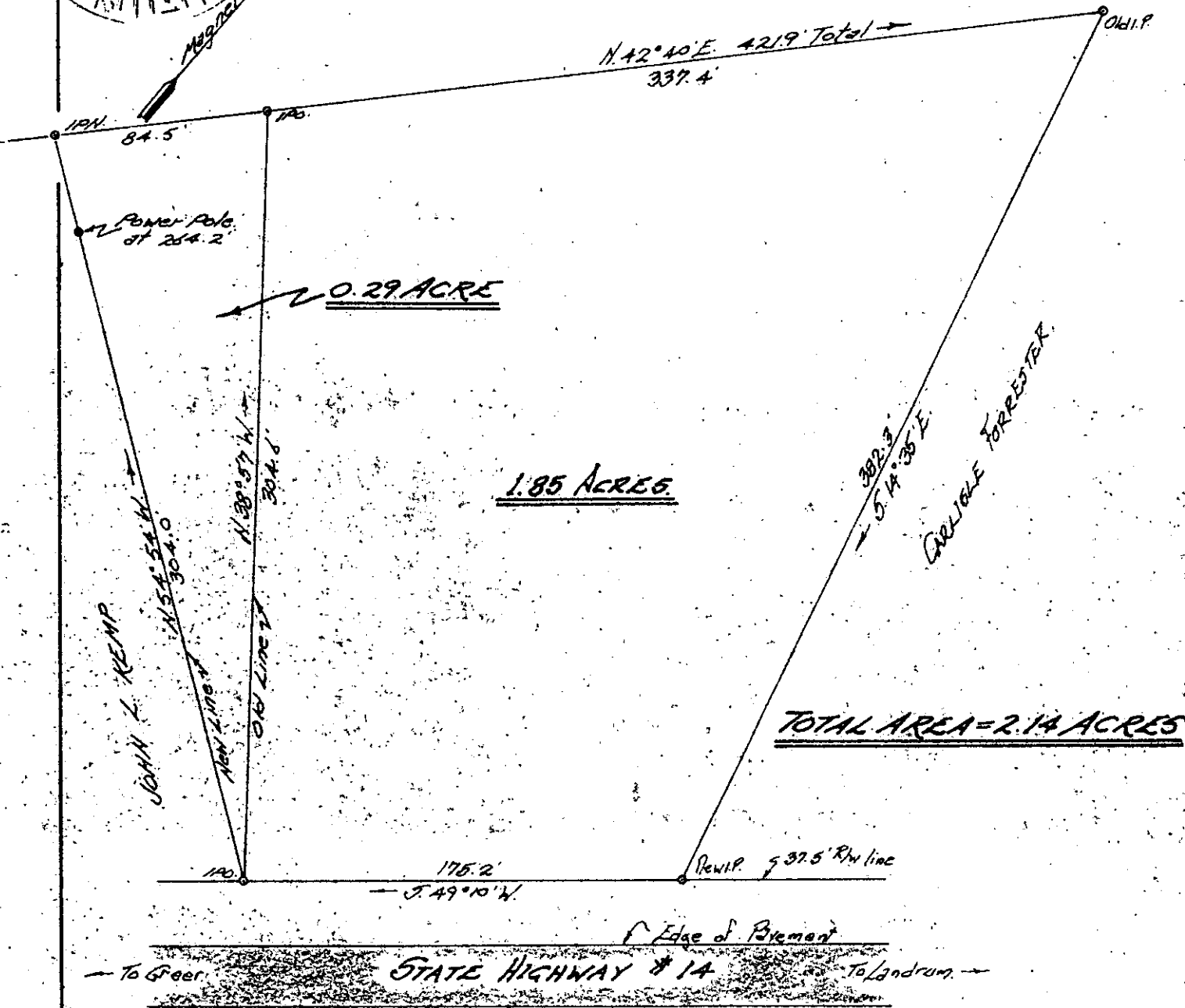
9,28,82

Stephen W. Jarner
Chairman, Secretary, or Director of
Planning.
Greenville County Planning Commission

MICROFILMED



BILL GROCE



PROPERTY OF
DOUGLAS E. GOLEY

Located approx 12 miles North of Greer

HIGHLAND TOWNSHIP GREENVILLE COUNTY

SOUTH CAROLINA



SCALE: 1" = 60 FEET

JUNE 9 1970

Survey made June 5, 1970

John A. Simmons
John A. Simmons, Reg. Surveyor # 2212
GREER, S.C.

776
9-G-31

NOTE: Plat amended Sept. 2, 1982
to show 0.29 Acre.

